



Energy & Telecom:

Transportation Systems, Distribution and Communications

CORPORATE PROFILE

January 2021

GRUPO INTEGRAL
DRAGDE
S.A.deC.V.



Energy & Telecom:

Transportation Systems, Distribution and Communications
CORPORATE PROFILE
January 2021



DRAGDE is an expert, dynamic and solid company dedicated to the development of engineering, supplies, consulting, project management, permitting and construction management (EPC) specialized in the field of energy, civil and telecommunications infrastructure.

Inspired by the principles of sustainable development, DRAGDE combines in its projects in an extraordinary way highly trained personnel, quality of international standards and care for the environment to result in the development of solutions capable of contributing to the economy and quality of life of our society.

OUR PHILOSOPHY

Our cornerstone is the commitment to always develop with honesty, integrity and sustainability, always keeping in mind our projection: Clean waters, accessible energy, sustainable cities, always improving the quality of life of the communities where we interact.

OUR MISSION

We execute projects efficiently with the highest standards for our clients, partners and investors. To provide the most complete and accurate service, we add value to our experience, foresight and talent of each of our members.

Energy & Telecom:

Transportation Systems, Distribution and Communications
CORPORATE PROFILE
January 2021



OUR VISION

Our vision is to maximize and integrate our experience and specialization in order to become the best solution for projects in Mexico. Always focused on giving value to each project for our clients, partners, collaborators and the community in general.

OUR VALUES

- Professionalism
- Confidence
- Responsibility
- Commitment
- Quality
- Industrial Safety
- Occupational Safety
- Environment

Energy & Telecom:

Transportation Systems, Distribution and Communications
CORPORATE PROFILE
January 2021



SPECIALIZED SERVICES IN ENGINEERING AND CONSTRUCTION

DESIGN OF PRE-ENGINEERING, BASIC AND DETAIL ENGINEERING FOR PROJECTS OF THE ENERGY BRANCH, CIVIL INFRASTRUCTURE AND TELECOMMUNICATIONS.

- Gas pipelines, combined cycles, refineries, aqueducts, and fluid transport systems in general.
- Compression and MRyC Stations.
- Maritime and land oil and gas transportation systems.
- Wind farms.
- Telecommunication systems.
- Mini refineries.
- Fiber optics and telecommunications solutions.
- Maritime platforms.
- Electrical substations

Energy & Telecom:

Transportation Systems, Distribution and Communications
CORPORATE PROFILE

January 2021



SPECIALIZED SERVICES

OIL, GAS & ELECTRICITY

LINE CONSTRUCTION (Pipeline Mechanical Works)

- Right of way opening (ROW opening)
- Unloading and parade of piping in stockpiling and DDV (Stringing)
- Bending topography
- Cold pipe bending (Bending)
- Pipe beveling
- Automatic welding
- Manual welding
- Joint coating FBE (FBE joint coating)
- Trenching
- Lowering pipe in ditch (Lowering)
- Trench filling (Backfilling)
- DDV restoration (ROW restoring)
- Construction of valve stations (MLVs)
- Last mile and residential services
- MAINTENANCE OF POWER SUBSTATIONS; Generating Units, TurboGas, Conventional, Mobile and Combined Cycles.



Energy & Telecom:

Transportation Systems, Distribution and Communications
CORPORATE PROFILE

January 2021



Energy & Telecom:

Transportation Systems, Distribution and Communications
CORPORATE PROFILE
January 2021

COMPRESSION, MEASUREMENT, REGULATION AND CONTROL STATIONS (Compressor Stations MR&C)

- Topography
- Earth movements
- Civil and building Works
- Electro-instrumental works (Electrical and control)
- Piping and equipment assembly (Piping Mechanical Works)



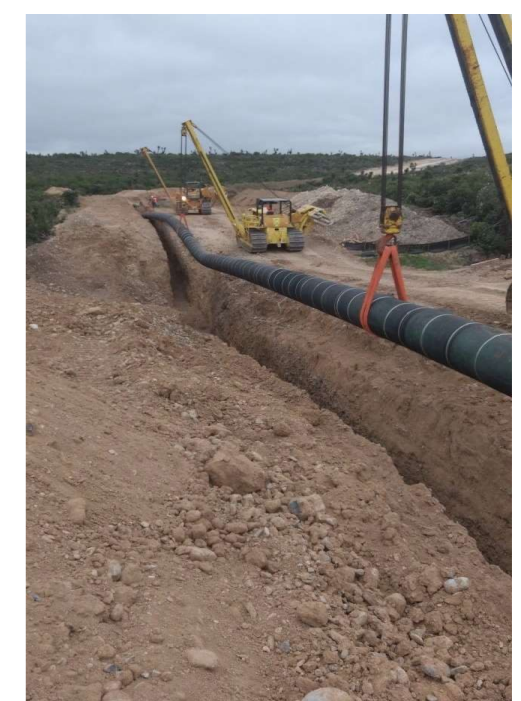
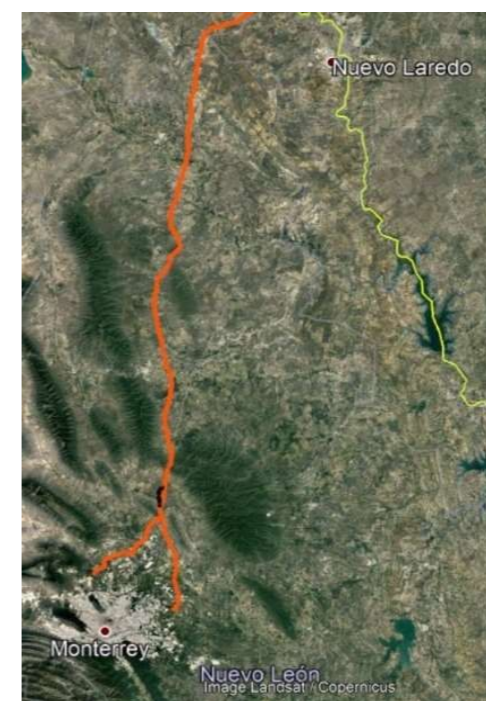
Energy & Telecom:

Transportation Systems, Distribution and Communications
CORPORATE PROFILE
January 2021

CURRENT AND COMPLETED PROJECTS

CONSTRUCTION OF GAS PIPELINE "NUEVA ERA 30" 45KM

LOCATION	Colombia - Escobedo
ACTIVITY	Civil engineerings and Mechanical Spread. 2
LENGTH	45 km
DIAMETER	30"
START	September 2017
FINISH	April 2018



Energy & Telecom:

Transportation Systems, Distribution and Communications
CORPORATE PROFILE
January 2021

DIRECTIONAL CROSSING (HDD) “RIO CHINIPAS” Contractor: SAIPEM Client: TransCanada



LOCATION	Border between Sinaloa and Chihuahua states
ACTIVITY	HDD
LENGTH	560 m
DIAMETER	30"
START	June 2016
FINISH	December 2016



Energy & Telecom:

Transportation Systems, Distribution and Communications
CORPORATE PROFILE

January 2021



TOPOGRAPHY "GAS PIPELINE TUXPAN - TULA" Contractor: BONATTI SPA Client: TransCanada



LOCATION	Veracruz, México
ACTIVITY	Topography
LONGITUD	N/A
DIAMETER	N/A
START	June 2016
FINISH	October 2017



Energy & Telecom:

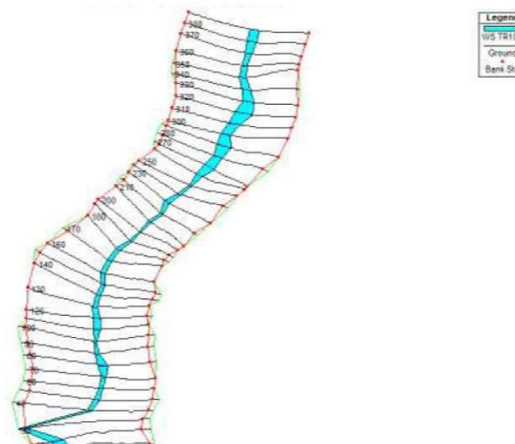
Transportation Systems, Distribution and Communications
CORPORATE PROFILE

January 2021

HYDROLOGICAL STUDIES "GAS PIPELINE TUXPAN - TULA"

Contractor: BONATTI SPA

Client: TransCanada



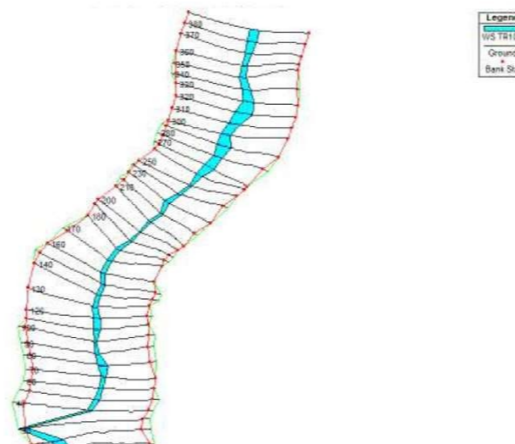
LOCATION	Veracruz - Hidalgo
ACTIVITY	Studies
LONGITUD	247 km
DIAMETER	36"
START	June 2016
FINISH	October 2017



Energy & Telecom:

Transportation Systems, Distribution and Communications
CORPORATE PROFILE
January 2021

HYDROLOGICAL STUDIES "GAS PIPELINE TUXPAN - TULA" Contractor: BONATTI SPA Client: TransCanada



LOCATION	Veracruz - Hidalgo
ACTIVITY	Studies
LONGITUD	247 km
DIAMETER	36"
START	June 2016
FINISH	October 2017



Energy & Telecom:

Transportation Systems, Distribution and Communications
CORPORATE PROFILE
January 2021



COMPRESSION STATION "EL ENCINO CHIHUAHUA"

Contractor: SAIPEM

Client: TransCanada

In 2015 the **ConstruDRAGDE Group** opened its offices in Mexico City with the purpose of venturing into the Oil & Gas industry, since its partners have actively participated as Directors and Managers of Projects and Engineering, in charge of the Construction of pipelines and stations. compression and measurement systems for the transportation and distribution of natural gas, in representative works such as:

LOCATION	Chihuahua, México
ACTIVITY	Construction
LONGITUD	N/A
TYPE	Electromecanics
START	June 2016
FINISH	October 2017



Energy & Telecom:

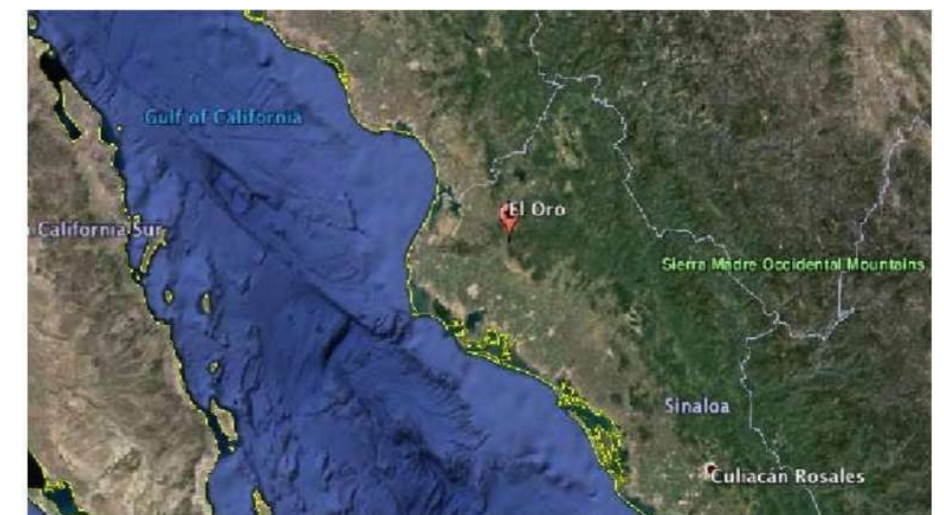
Transportation Systems, Distribution and Communications
CORPORATE PROFILE
January 2021



"EL ORO SINALOA" COMPRESSION STATION Contractor: SAIPEM Client: TransCanada



LOCATION	Chihuahua, México
ACTIVITY	Construcción
LONGITUD	N/A
TYPE	Civil engineering and electromechanics
START	June 2016
FINISH	October 2017



Energy & Telecom:

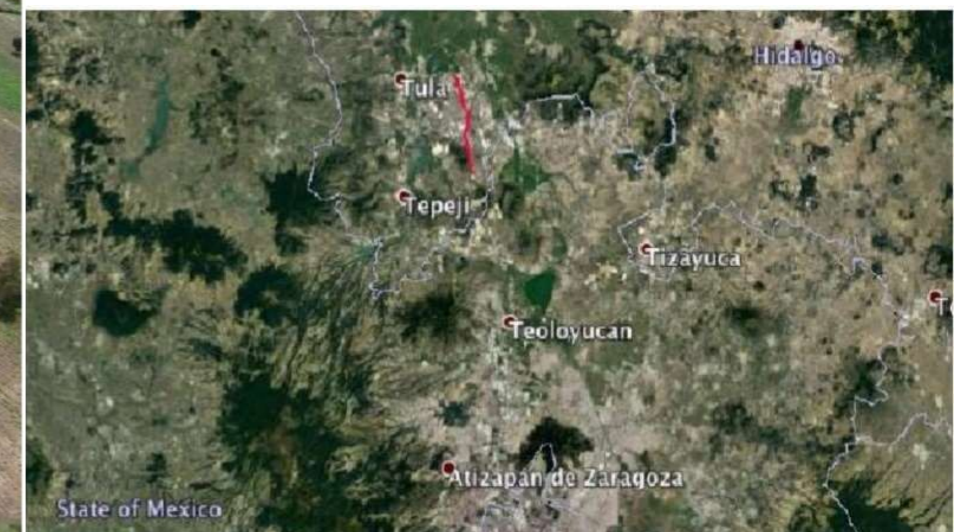
Transportation Systems, Distribution and Communications
CORPORATE PROFILE
January 2021



ENGINEERING AND CONSTRUCTION OF GAS PIPELINE "RAMAL TULA" Client: ATCO Pipelines



LOCATION	Chihuahua, Mexico
ACTIVITY	Construction
LONGITUD	N/A
TYPE	Civil engineering and electromechanics
START	June 2016
FINISH	October 2017



Energy & Telecom:

Transportation Systems, Distribution and Communications
CORPORATE PROFILE

January 2021



Basic and detailed engineering projects

Private tender for the development of a port terminal for clean oil products (gasoline and diesel) in the port of Progreso, Yucatán.

Client: Confidential

Period: 3 months.

Project: Basic and Detailed Engineering

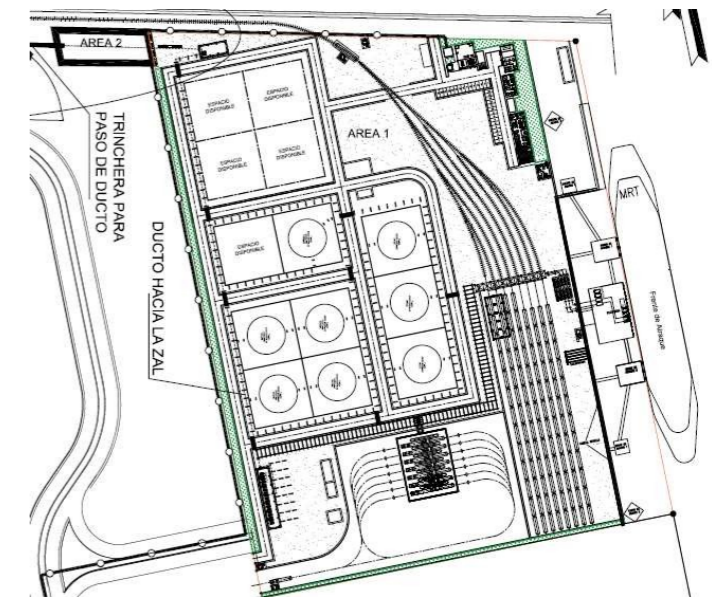
Public tender for the development of a port terminal for clean products in the expansion of the Port of Veracruz, Veracruz.

Client: Administración Portuaria Integral de Veracruz, S.A. de C.V.

Period: 5 months

Project: Basic and detailed engineering and procurement

Permits for a gas pipeline interconnection
12 " inches and 3 km to the CENAGAS pipeline
transportation system in Orizaba, Veracruz.



Energy & Telecom:

Transportation Systems, Distribution and Communications
CORPORATE PROFILE
January 2021

Project:

Port Terminal of 450,000 barrels of storage of Gas L.P. in Tuxpan, Ver.

- Client: Termigas, S.A. de C.V.
- Period: 2009-2011
- O&M period: 2012-2014
- Services: Project Management, IPC, operation and maintenance
- Cost: \$ 180 million.
- Employed personnel: 27 professionals.
- O&M staff: 30 employees in 3 shifts



Energy & Telecom:

Transportation Systems, Distribution and Communications
CORPORATE PROFILE

January 2021



Project:

Interconnection to the Pemex Pipeline LPG (Cactus-Guadalajara) of 8 " diameter and 300 meters in length to the Invalle Plant in Tepeji del Río, Hidalgo

- Client: Invalle, S.A. de C.V.
- Services: Engineering, procurement and construction.
- Period: 2017-2018



Energy & Telecom:

Transportation Systems, Distribution and Communications
CORPORATE PROFILE

January 2021



Project:

Interconnection to the Pemex Pipeline LPG (Cactus-Guadalajara) of 8 " diameter and 300 meters in length to the Invalle Plant in Tepeji del Río, Hidalgo

- Client: Invalle, S.A. de C.V.
- Services: Engineering, procurement and construction.
- Period: 2017-2018

<https://twitter.com/apple/status/1437819762357067777>



Energy & Telecom:

Transportation Systems, Distribution and Communications
CORPORATE PROFILE

January 2021



COMPLETED PROJECTS

Pressure Vessels

ASME Code Seal "U" and "R", ASTM, API, TEMA, AWS,
NACE

Water, Oil and Gas Separators

- Two stages, Three Stages,
- Test Separators
- Remote Separators
- Balance Separators Tanks
- Condensate Separators Tanks
- With high efficiency Internals
- Scrubbers
- Rectifiers

Pig Launchers and Receivers (Skid mounted or non skid mounted)

Gas Conditioning Systems, Purification and Gas Scrubbers
Totally instrumented packages for managing different gases:
Sour, Natural, Hydrogen, Nitrogen, etc.

Gas Scrubbers
Gas Dehydrators

Gas Filtering Systems:

Gas Drying, Separation, Coalescing, for natural and sour gas.

Measuring Skids

Different Gases, Sour, Natural, Hydrogen, Nitrogen

Regulation Skids:

Packages mounted on structural skid in two and three stages

Diesel Packages:

Instrumented package for diesel pumping in platforms or remote stations.

Oil Drainages Packages:

Instrumented with positive displacement pumps,
API Code and structural skid.

Spool Manifolds and Heads

Energy & Telecom:

Transportation Systems, Distribution and Communications
CORPORATE PROFILE

January 2021



Pig Launchers and Receivers Offshore and Onshore and Offshore for standard pigs or last generation. Mounted on structural skid or for concrete supports.

System and equipment for pig management. Includes:

- Memory of Calculus
- When it is required ASME "U" Stamp
- Loads Calculus
- Moments sum Calculus
- Gravity center calculus
- Dimensional Drawings of skid
- Dimensional Drawings of Pig Launcher and Pig Receiver
- Drawings of equipment's outlets

Fittings as:

- Monoblock Joints
- Cosasco Nipple
- Instrumentation
- Pig Pass Detectors
- Special Flow Tees

- Valves with actuators on line and control panels
- With Carbide Tungstene Covering or Nickel Electroless
- Safety and relief Valves

Rotary Pumps

For use in plants, terminals, Auto-tanks, Spare parts, as well as automatic pumps of Positive Displacement for drainages.

- Distributor of APS products or Monoblock Insulating Joints
- Casing Spacers and end seals
- Innerlynx Modular Mechanical Seals
- Flange isolating Gasket kits
- Flange Band protectors
- U Bolt Cote
- Safety Spray Shields
- Wall Sleeves
- Hammer Cushion Pads
- Meter Service Fittings
- DuoCon Centralizers

Energy & Telecom:

Transportation Systems, Distribution and Communications
CORPORATE PROFILE

January 2021



Distributor of TUBE TURNS TECHNOLOGIES (SYPRIS) Brand products

- Hinged Closures quick opening and close (150- 1500#)
- T-Bolt Closures
- Yoke Closures
- Threaded Closures
- Pressuring testers fittings
- Special components for piping
- Monolithic Insulating Joints TTT

Energy & Telecom:

Transportation Systems, Distribution and Communications
CORPORATE PROFILE

January 2021



PEMEX

- Oil Drainages Packages, completely instrumented and mounted on structural skid, including Tank, Filter, Pumps and Instrumentation, for PEP, Complementary jobs with the support of ship DP11, on infrastructure jobs and production systems, safety, services and equipments on AILT and PEP installations.
- Gas Scrubber Package, Instrumented and skid mounted, totally integrated with platforms and ladders, of 4.5 m Height x 4.20 width x 4.80 m Long, for AKAL-H2 PEMEX platform.
- Gas Scrubber Package, Instrumented and skid mounted, totally integrated with platforms and ladders, of 4.5 m Height x 4.20 width x 4.80 m Long, for AKAL-GS PEMEX platform.
- Pig Launcher and Pig Receiver, instrumented, of 16" x 12" diam. ANSI
- 600#, Skid Mounted, for PEP, for Activo de Producción Bellota Jujo.
- Gas Scrubbers Packages, Instrumented of 24" x 16" ANSI 300#, with a capacity of 0.8 MMCFSD of gas and 80 GPD. Totally instrumented for platforms Etkal-101 and Chuhuk-A in Sonda de Campeche, PEMEX.
- Gas Test Separator Tag K-FA-03 of 1524 mm Diam. X 5182 mm Length for Platform Kuil-A
- Pig Launchers and Receivers Skid Mounted of 20" x 16" ANSI 900#
- Scrap Traps Launchers and Receivers of the following dimensions: 10x6, 12x8, 14x10, 16x12, 20x16 ANSI 600#
- Instrumented Pig Receiver of 10"x6" ANSI 600#
- Horizontal Separator Two Stage of 30" diam. x 10' Length. With capacity of 3,550 BPD of oil and 3.5 MMPCSD of gas. With two Ellipsoidal Heads, Skid Mounted, totally instrumented.
- Instrumented Pig Launcher and Receiver of 24" x 18" diam. ANSI 600# for Gas Pipeline of 18" diam.

Energy & Telecom:

Transportation Systems, Distribution and Communications
CORPORATE PROFILE

January 2021



- Vertical Coalescing Filters of 6" diam. ANSI 600# for Gas Pipeline of 18" diam.
- Instrumented Gas Scrubber Package Mounted on structural skid for Marine Platform SINAN-118
- Instrumented Gas Scrubber Package Mounted on structural skid for Marine Platform ATUN-D
- Instrumented Pig Launcher of 16" x 12" diam. for Marine Platform ATUN-D
- Pig Launcher and Receiver of 10" x 6" diam. for Hydrocarbon Transportation in Activo Integral Macuspana".
- Pig Launcher and Receiver of 12" x 8" diam. for Hydrocarbon Transportation in Activo Integral Macuspana".
- Pig Launcher and Receiver of 10" x 6" diam. for Hydrocarbon Transportation in Activo Integral Macuspana".
- Hydrogen Drying Modular Plant: using molecular mesh with a capacity of 9 MMSCFD for Refinery in Salamanca, Guanajuato. (PEMEX)
- Reciprocating Compressor of 30 HP Brand Blackmer: for LP Gas transferring for lubricant oil plant in Lagos de Moreno, Jal.
- Oil Gas Flare Boom for Perforation Platform KAX-1. (PEMEX)
- Vent Gas Drying Modular Plant of 18,000 MMSCFD: for tereftalic acid production plant.
- Air Drying Modular Plant of 4800 NM3/HR, for tereftalic acid production plant.
- Instrumented Pig Launchers and Receivers of 8"X10" diam. and of 12" x 16" Skid Mounted for condensate gas on Sonda de Campeche (PEMEX).
- Two Sour Gas Scrubbers of 60MMSCFD for perforationplatform.
- Reciprocating Compressor of 20 HP brand Blackmer for ammonia transference.
- Vapor Gas Refrigeration Modular Plant of Butamer Planton Refinery in Ciudad Madero, Tamaulipas.

Energy & Telecom:

Transportation Systems, Distribution and Communications
CORPORATE PROFILE

January 2021



- Reciprocating Compressors of 50 HP brand Blackmer for decantation of propylene.
- Instrumented Pig Launchers and Receivers of 16" x 20" diam. And of 24" x 30" diam. Skid Mounted, for marine Platforms.
- Sour Gas Scrubber of 1.0 MMSCFD for Perforation Platform.
- Reciprocating Compressors of 15 HP of Nitrogen Gas brand Blackmer para Basf Mexicana
- Instrumented Pig Launchers and Receivers of 24" x 30" diam. Skid Mounted for Gas pipeline of 24" x 8.1 Km. in Cantarell.
- Gas Accumulator Vessel for Gas pipeline of 24" x 8.1 Km. In Cantarell
- Heat Exchanger for Gas Pipeline of 24" x 8.1 Km. In Cantarell.
- Vent Gas Refrigeration Plant (Chiller) totally assembled in plant for Butane Project in Madero Tamaulipas.
- Four Gas Scrubbers vertical cylinder type for fields SINAN DL-1, SINAN-101, SINAN-201, CITAM-101.
- Sodium Hypochlorite Generation Package for platform Manik-A in Tampico, Tamaulipas.
- Remote Separator Package Two stage type totally instrumented of 23 meters long for platform PP-KU-C in Tampico, Tamaulipas.
- Test Separator Package two stage package totally instrumented, for platform PP-KU-C in Tampico, Tamaulipas.
- (2) Gas Conditioning Packages for platforms Maloob-A and Maloob-B.

Energy & Telecom:

Transportation Systems, Distribution and Communications
CORPORATE PROFILE

January 2021



SOME OF OUR CLIENTS

- IGASAMEX, S.A. DE C.V.
- ELECNOR MEXICO, S.A. DE C.V.
- CONSTRUCTORA SUBACUÁTICA DIAVAZ, S.A. DE C.V.
- OHL INDUSTRIAL SA DE CV
- GRUPO COCOMEX SA DE CV
- VEPICA, S.A. DE C.V.
- TORDEC SA DE CV
- GRUPO EVYA S.A DE C.V.
- OXITENO, S.A. DE C.V.
- CINDRO, S.A. DE C.V.
- CONSULTORIA Y CONSTRUCCION DE POZA RICA, SA DE CV
- J. RAY MC DERMOTT, S.A. DE C.V.
- ELECTROMECHANICA OMEGA, S.A. DE C.V.
- SUMINISTROS INDUSTRIALES DEL PUERTO, S.A. DE C.V.
- CONSTRUCTORA ANTAR, S.A. DE C.V.
- CONSTRUCTORA ELVIC, S.A. DE C.V.
- GRUPO VAZQUEZ DEL SUR, S.A. DE C.V. CONSTRUCTORA MARUSA, S.A. DE C.V.
- ELECNOR, S.A. DE C.V.
- CONSTRUCCIONES INDUSTRIALES E INMOBILIARIOS DEL NORTE, S.A. DE C.V.
- CONSTRUCTORA CHAVEZ, S.A. DE C.V.
- SERVICIOS INTEGRALES GAMA, S.A. DE C.V.
- COMERCIALIZACION INTERNACIONAL DE TAMPICO, S.A. DE C.V.
- CONIP CONTRATISTAS, S.A. DE C.V.
- CONSTRUCCION Y SERVICIOS INTEGRALES SIGMA, S.A. DE C.V.
- OPERADORA CICSA, S.A.
- SWECOMEX, S.A. DE C.V.
- MILLER PIPELINE DE MEXICO, S.A. DE C.V.
- INDUSTRIAL PERFORADORA DE CAMPECHE, S.A. DE C.V.
- GRUPO PROFESIONAL PLANEACION Y PROYECTOS, S.A. DE C.V.
- CONSTRUCTORA ARECHIGA, S.A. DE C.V.
- GLOBAL OFFSHORE, S. DE R.L. DE C.V.
- CONSTRUCTORA BAY DE MÉXICO, S.A. DE C.V.
- BUFETE INDUSTRIAL, S.A. DE C.V. +
- TEREFTALATOS MEXICANOS, S.A. DE C.V.
- (PETROCEL-TEMEX) MEXICANA DE LUBRICANTES, S.A. DE C.V.
- INDUSTRIAS DERIVADAS DEL ETILENO, S.A. DE C.V.

GRUPO INTEGRAL
DRAGDE
S.A.deC.V.



CORPORATE HQ

*435 Montañas Calizas,
Miguel Hidalgo, Mexico City 11000*

www.dragde.com.mx